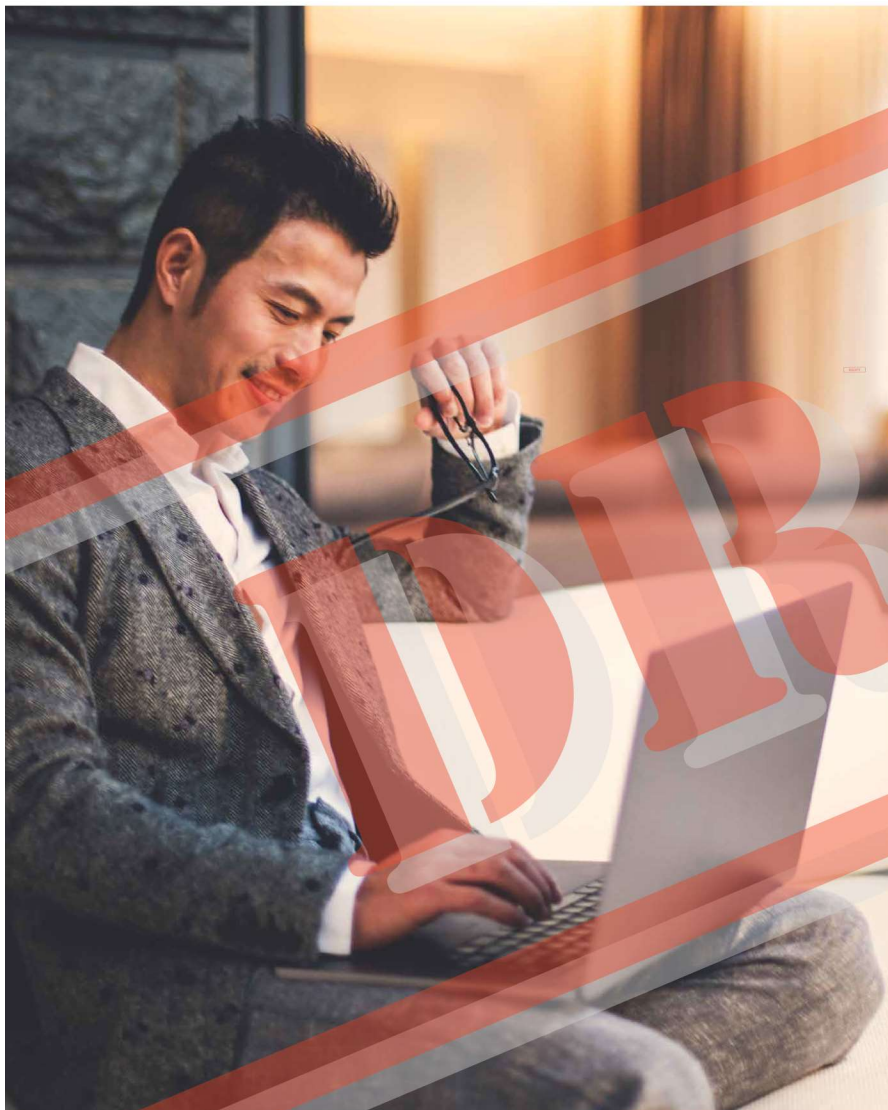
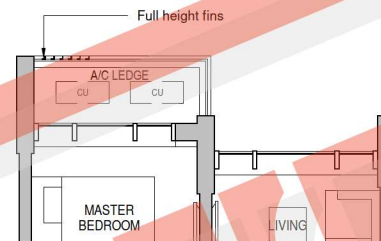


THE IDEAL PLACE FOR YOUR PERSONAL SPACE AND HOME OFFICE



Huttons[®]
The Agency of Choice

1-BEDROOM



TYPE A1-G
463 sqft / 43 sqm

Tower 26
03-08



TYPE A1
463 sqft / 43 sqm

Tower 26
04-08 to 14-08

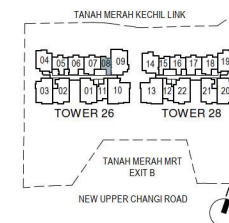
TYPE A1-E
570 sqft / 53 sqm
(inclusive of 10 sqm High Ceiling)

Tower 26
15-08



LEGEND

- AC LEDGE - Air Conditioner Ledge
- CU - Condensing Unit
- HS - Household Shelter
- WD - Washer cum Dryer
- F - Refrigerator
- DB - Distribution Board
- ST - Storage
- * - Mirrored Unit



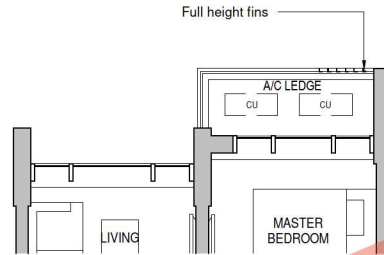
Area includes A/C ledge, balconies, private enclosed space and void (where applicable). Areas are estimated only and are subject to final survey. Plans are not to scale and subject to changes as may be required by the relevant authorities. The balconies shall not be enclosed unless with approved screen. For an illustration of the approved screen, please refer to the annex of balcony screen side letter.

1-BEDROOM

TYPE A1A-G

463 sqft / 43 sqm

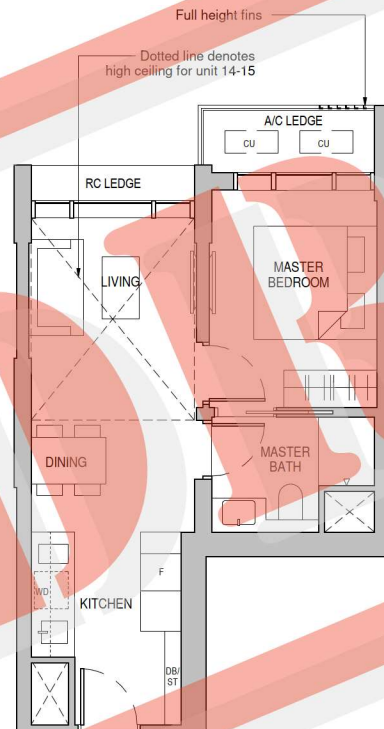
Tower 28
03-15



TYPE A1A

463 sqft / 43 sqm

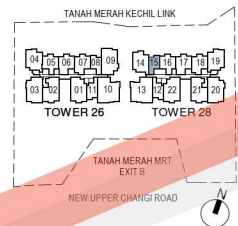
Tower 28
04 -15 to 13 - 15



TYPE A1A-E

570 sqft / 53 sqm
(inclusive of 10 sqm High Ceiling)

Tower 28
14-15



LEGEND

- AC LEDGE - Air Conditioner Ledge
- CU - Condensing Unit
- HS - Household Shelter
- WD - Washer cum Dryer
- F - Refrigerator
- DB - Distribution Board
- ST - Storage
- * - Mirrored Unit

Area includes A/C ledge, balconies, private enclosed space and void (where applicable). Areas are estimated only and are subject to final survey. Plans are not to scale and subject to changes as may be required by the relevant authorities. The balconies shall not be enclosed unless with approved screen. For an illustration of the approved screen, please refer to the annex of balcony screen side letter.

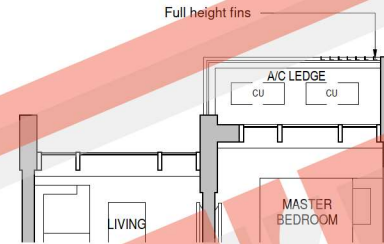
1-BEDROOM + STUDY

TYPE A2S-G

538 sqft / 50 sqm

Tower 26
03-11

Tower 28
03-12*

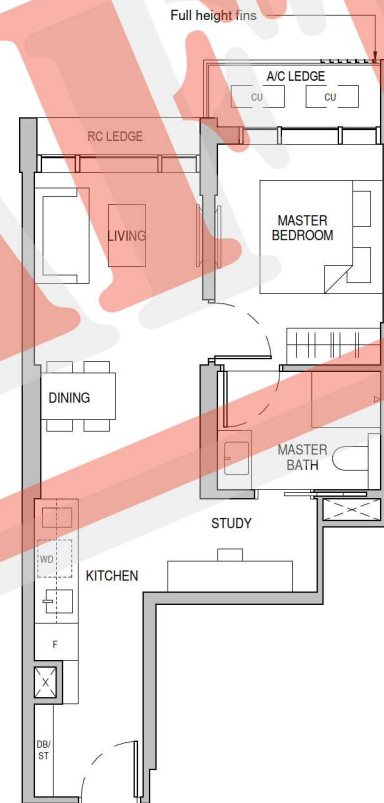


TYPE A2S

538 sqft / 50 sqm

Tower 26
04-11 to 14-11

Tower 28
04-12* to 13-12*



LEGEND

- AC LEDGE - Air Conditioner Ledge
- CU - Condensing Unit
- HS - Household Shelter
- WD - Washer cum Dryer
- F - Refrigerator
- DB - Distribution Board
- ST - Storage
- * - Mirrored Unit

Area includes A/C ledge, balconies, private enclosed space and void (where applicable). Areas are estimated only and are subject to final survey. Plans are not to scale and subject to changes as may be required by the relevant authorities. The balconies shall not be enclosed unless with approved screen. For an illustration of the approved screen, please refer to the annex of balcony screen side letter.



THE PERFECT HOME FOR THE PERFECT COUPLE



TYPE B1-P
678 sqft / 63 sqm

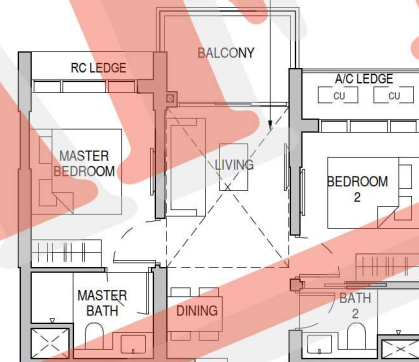
Tower 26
03-05



Dotted line denotes high ceiling for unit 15-05

TYPE B1
678 sqft / 63 sqm

Tower 26
04-05 to 14-05



TYPE B1-E
786 sqft / 73 sqm
(inclusive of 10 sqm High Ceiling)

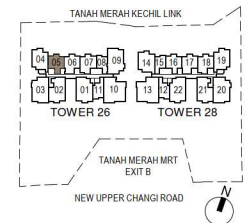
Tower 26
15-05

CHRYST



LEGEND

- AC LEDGE - Air Conditioner Ledge
- CU - Condensing Unit
- HS - Household Shelter
- WD - Washer cum Dryer
- F - Refrigerator
- DB - Distribution Board
- ST - Storage
- * - Mirrored Unit



Area includes A/C ledge, balconies, private enclosed space and void (where applicable). Areas are estimated only and are subject to final survey. Plans are not to scale and subject to changes as may be required by the relevant authorities. The balconies shall not be enclosed unless with approved screen. For an illustration of the approved screen, please refer to the annex of balcony screen side letter.

2-BEDROOM

2-BEDROOM + STUDY

TYPE B1A-P

689 sqft / 64 sqm

Tower 28
03-16



TYPE B1A

689 sqft / 64 sqm

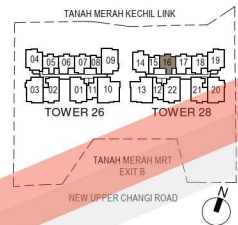
Tower 28
04-16 to 13-16



TYPE B1A-E

797 sqft / 74 sqm
(inclusive of 10 sqm High Ceiling)

Tower 28
14-16



- LEGEND**
- AC LEDGE - Air Conditioner Ledge
 - CU - Condensing Unit
 - HS - Household Shelter
 - WD - Washer cum Dryer
 - F - Refrigerator
 - DB - Distribution Board
 - ST - Storage
 - * - Mirrored Unit

Area includes A/C ledge, balconies, private enclosed space and void (where applicable). Areas are estimated only and are subject to final survey. Plans are not to scale and subject to changes as may be required by the relevant authorities. The balconies shall not be enclosed unless with approved screen. For an illustration of the approved screen, please refer to the annex of balcony screen side letter.

TYPE B2S-P

753 sqft / 70 sqm

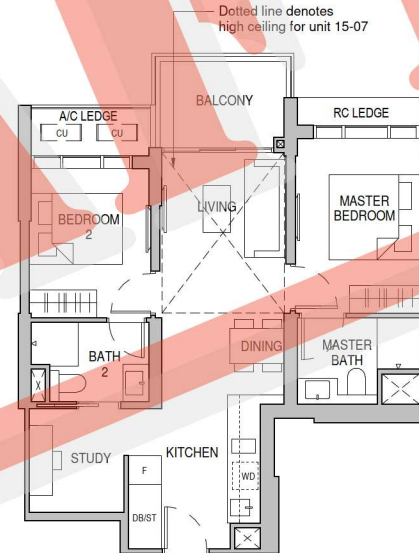
Tower 26
03-07



TYPE B2S

753 sqft / 70 sqm

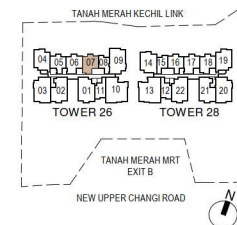
Tower 26
04-07 to 14-07



TYPE B2S-E

861 sqft / 80 sqm
(inclusive of 10 sqm High Ceiling)

Tower 26
15-07



- LEGEND**
- AC LEDGE - Air Conditioner Ledge
 - CU - Condensing Unit
 - HS - Household Shelter
 - WD - Washer cum Dryer
 - F - Refrigerator
 - DB - Distribution Board
 - ST - Storage
 - * - Mirrored Unit

Area includes A/C ledge, balconies, private enclosed space and void (where applicable). Areas are estimated only and are subject to final survey. Plans are not to scale and subject to changes as may be required by the relevant authorities. The balconies shall not be enclosed unless with approved screen. For an illustration of the approved screen, please refer to the annex of balcony screen side letter.

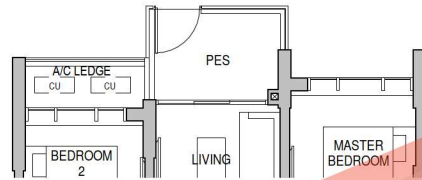
2-BEDROOM + STUDY

2-BEDROOM + STUDY

TYPE B2SA-P

753 sqft / 70 sqm

Tower 28
03-18



TYPE B2SA

753 sqft / 70 sqm

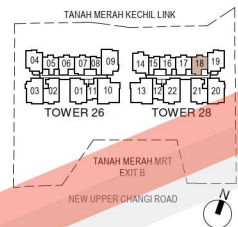
Tower 28
04-18 to 13-18



TYPE B2SA-E

861 sqft / 80 sqm
(inclusive of 10 sqm High Ceiling)

Tower 28
14-18



LEGEND

- AC LEDGE - Air Conditioner Ledge
- CU - Condensing Unit
- HS - Household Shelter
- WD - Washer cum Dryer
- F - Refrigerator
- DB - Distribution Board
- ST - Storage
- * - Mirrored Unit

Area includes A/C ledge, balconies, private enclosed space and void (where applicable). Areas are estimated only and are subject to final survey. Plans are not to scale and subject to changes as may be required by the relevant authorities. The balconies shall not be enclosed unless with approved screen. For an illustration of the approved screen, please refer to the annex of balcony screen side letter.

TYPE B3S-P

764 sqft / 71 sqm

Tower 26
03-06



TYPE B3S

764 sqft / 71 sqm

Tower 26
04-06 to 14-06



Tower 28
06-17 to 13-17

TYPE B3S-E

883 sqft / 82 sqm
(inclusive of 11 sqm High Ceiling)

Tower 26
15-06

Tower 28
14-17



LEGEND

- AC LEDGE - Air Conditioner Ledge
- CU - Condensing Unit
- HS - Household Shelter
- WD - Washer cum Dryer
- F - Refrigerator
- DB - Distribution Board
- ST - Storage
- * - Mirrored Unit

Area includes A/C ledge, balconies, private enclosed space and void (where applicable). Areas are estimated only and are subject to final survey. Plans are not to scale and subject to changes as may be required by the relevant authorities. The balconies shall not be enclosed unless with approved screen. For an illustration of the approved screen, please refer to the annex of balcony screen side letter.

A CLASSIC LAYOUT THAT IS JUST RIGHT FOR A SMALL HOUSEHOLD



Huttons[®]
The Agency of Choice

3-BEDROOM CLASSIC

TYPE C1-P

904 sqft / 84 sqm

Tower 26
03-04

Tower 28
03-19*

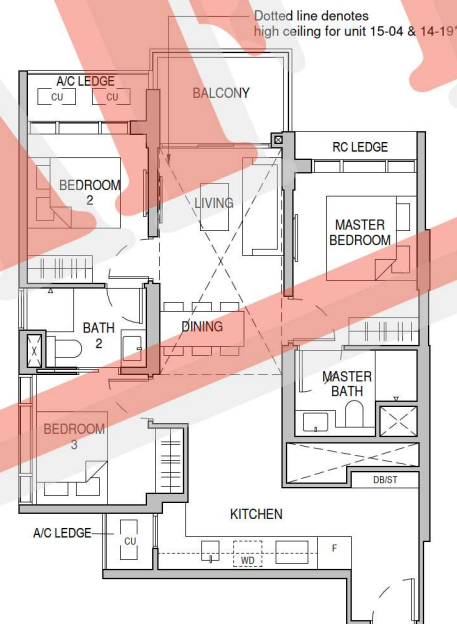


TYPE C1

904 sqft / 84 sqm

Tower 26
04-04 to 14-04

Tower 28
04-19* to 13-19*



TYPE C1-E

1055 sqft / 98 sqm
(inclusive of 14 sqm High Ceiling)

Tower 26
15-04

Tower 28
14-19*



LEGEND

AC LEDGE - Air Conditioner Ledge

CU - Condensing Unit

HS - Household Shelter

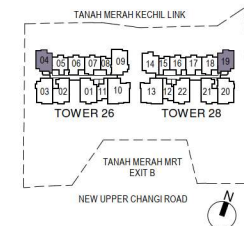
WD - Washer cum Dryer

F - Refrigerator

DB - Distribution Board

ST - Storage

* - Mirrored Unit



Area includes A/C ledge, balconies, private enclosed space and void (where applicable). Areas are estimated only and are subject to final survey. Plans are not to scale and subject to changes as may be required by the relevant authorities. The balconies shall not be enclosed unless with approved screen. For an illustration of the approved screen, please refer to the annex of balcony screen side letter.

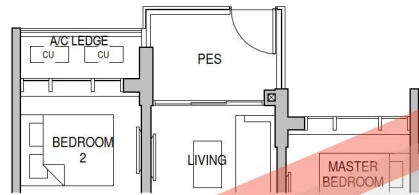
3-BEDROOM CLASSIC

3-BEDROOM DELUXE

TYPE C1A-P

904 sqft / 84 sqm

Tower 28
03-14



TYPE C2-P

1044 sqft / 97 sqm

Tower 26
03-02

Tower 28
03-21*



TYPE C1A

904 sqft / 84 sqm

Tower 28
04-14 to 13-14

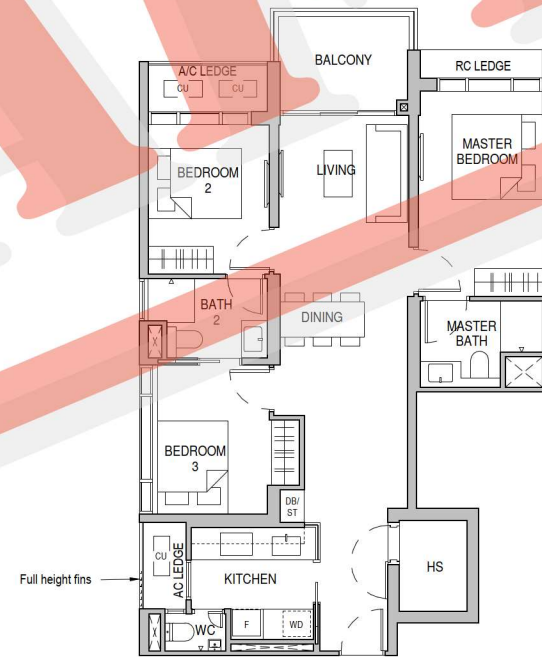


TYPE C2

1044 sqft / 97 sqm

Tower 26
04-02 to 14-02

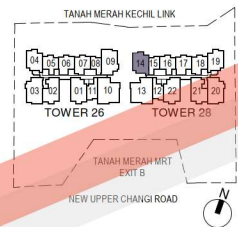
Tower 28
04-21* to 13-21*



TYPE C1A-F

1055 sqft / 98 sqm
(inclusive of 14 sqm High Ceiling)

Tower 28
14-14



- LEGEND**
- AC LEDGE - Air Conditioner Ledge
 - CU - Condensing Unit
 - HS - Household Shelter
 - WD - Washer cum Dryer
 - F - Refrigerator
 - DB - Distribution Board
 - ST - Storage
 - * - Mirrored Unit

Area includes A/C ledge, balconies, private enclosed space and void (where applicable). Areas are estimated only and are subject to final survey. Plans are not to scale and subject to changes as may be required by the relevant authorities. The balconies shall not be enclosed unless with approved screen. For an illustration of the approved screen, please refer to the annex of balcony screen side letter.



- LEGEND**
- AC LEDGE - Air Conditioner Ledge
 - CU - Condensing Unit
 - HS - Household Shelter
 - WD - Washer cum Dryer
 - F - Refrigerator
 - DB - Distribution Board
 - ST - Storage
 - * - Mirrored Unit

Area includes A/C ledge, balconies, private enclosed space and void (where applicable). Areas are estimated only and are subject to final survey. Plans are not to scale and subject to changes as may be required by the relevant authorities. The balconies shall not be enclosed unless with approved screen. For an illustration of the approved screen, please refer to the annex of balcony screen side letter.



A MULTI-FACETED SETUP FOR A MULTI-GENERATIONAL FAMILY



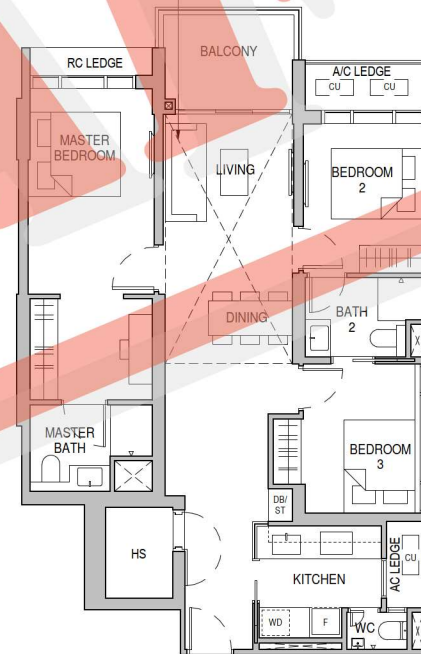
TYPE C3-P

1119 sqft / 104 sqm

Tower 26
03-01

Tower 28
03-22*

Dotted line denotes high ceiling for unit 15-01 & 14-22*



TYPE C3

1119 sqft / 104 sqm

Tower 26
04-01 to 14-01

Tower 28
04-22* to 13-22*

TYPE C3-E

1292 sqft / 120 sqm
(inclusive of 16 sqm High Ceiling)

Tower 26
15-01

Tower 28
14-22*

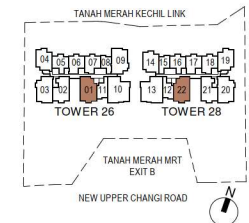


LEGEND

AC LEDGE - Air Conditioner Ledge
CU - Condensing Unit
HS - Household Shelter
WD - Washer cum Dryer

F - Refrigerator
DB - Distribution Board
ST - Storage
* - Mirrored Unit

Full height fins



Area includes A/C ledge, balconies, private enclosed space and void (where applicable). Areas are estimated only and are subject to final survey. Plans are not to scale and subject to changes as may be required by the relevant authorities. The balconies shall not be enclosed unless with approved screen. For an illustration of the approved screen, please refer to the annex of balcony screen side letter.

3-BEDROOM PREMIUM

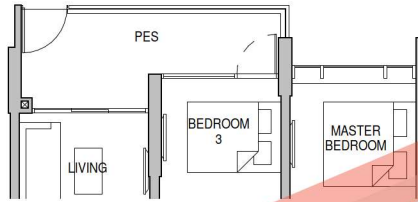
3-BEDROOM PREMIUM

TYPE C4-P

1163 sqft / 108 sqm

Tower 26
03-03

Tower 28
03-20*

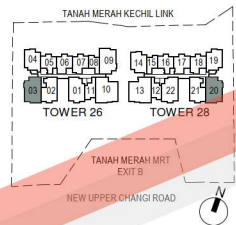


TYPE C4

1163 sqft / 108 sqm

Tower 26
04-03 to 14-03

Tower 28
04-20* to 13-20*



- LEGEND**
- AC LEDGE - Air Conditioner Ledge
 - CU - Condensing Unit
 - HS - Household Shelter
 - WD - Washer cum Dryer
 - F - Refrigerator
 - DB - Distribution Board
 - ST - Storage
 - * - Mirrored Unit

Area includes A/C ledge, balconies, private enclosed space and void (where applicable). Areas are estimated only and are subject to final survey. Plans are not to scale and subject to changes as may be required by the relevant authorities. The balconies shall not be enclosed unless with approved screen. For an illustration of the approved screen, please refer to the annex of balcony screen side letter.

TYPE C4A-P

1163 sqft / 108 sqm

Tower 26
03-09

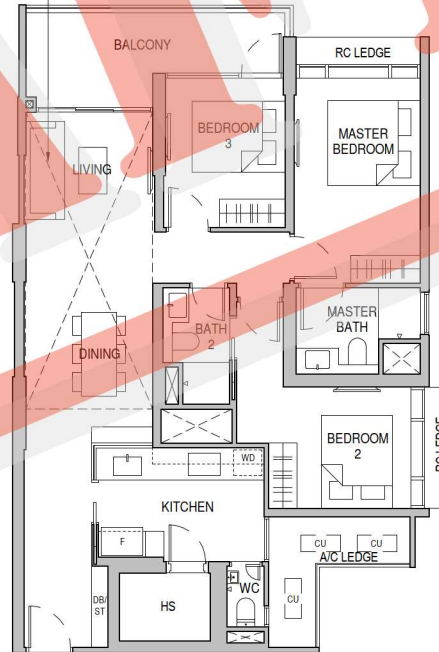


TYPE C4A

1163 sqft / 108 sqm

Tower 26
04-09 to 14-09

Dotted line denotes high ceiling for unit 15-09



TYPE C4A-E

1367 sqft / 127 sqm
(inclusive of 19 sqm High Ceiling)

Tower 26
15-09



- LEGEND**
- AC LEDGE - Air Conditioner Ledge
 - CU - Condensing Unit
 - HS - Household Shelter
 - WD - Washer cum Dryer
 - F - Refrigerator
 - DB - Distribution Board
 - ST - Storage
 - * - Mirrored Unit

Area includes A/C ledge, balconies, private enclosed space and void (where applicable). Areas are estimated only and are subject to final survey. Plans are not to scale and subject to changes as may be required by the relevant authorities. The balconies shall not be enclosed unless with approved screen. For an illustration of the approved screen, please refer to the annex of balcony screen side letter.

4-BEDROOM LUXURY

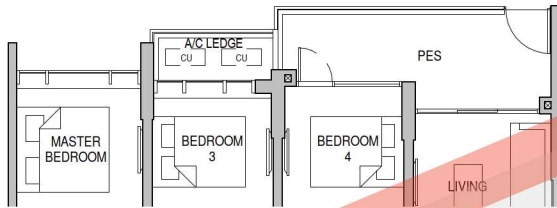
AN EXTRAORDINARY
SPACE THAT DEFINES
YOUR EXQUISITE TASTE

TYPE D1-P

1518 sqft / 141 sqm

Tower 26
03-10

Tower 28
03-13*

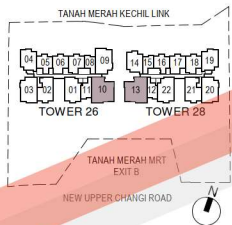


TYPE D1

1518 sqft / 141 sqm

Tower 26
04-10 to 14-10

Tower 28
04-13* to 13-13*



LEGEND

AC LEDGE - Air Conditioner Ledge
CU - Condensing Unit
HS - Household Shelter
WD - Washer cum Dryer

F - Refrigerator
DB - Distribution Board
ST - Storage
* - Mirrored Unit

Area includes A/C ledge, balconies, private enclosed space and void (where applicable). Areas are estimated only and are subject to final survey. Plans are not to scale and subject to changes as may be required by the relevant authorities. The balconies shall not be enclosed unless with approved screen. For an illustration of the approved screen, please refer to the annex of balcony screen side letter.



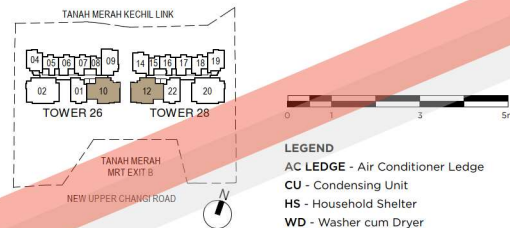
4-BEDROOM PENTHOUSE

TYPE PH1

2400 sqft / 223 sqm
(inclusive of 34 sqm High Ceiling)

Tower 26
15-10

Tower 28
14-12*



- LEGEND**
- AC LEDGE - Air Conditioner Ledge
 - CU - Condensing Unit
 - HS - Household Shelter
 - WD - Washer cum Dryer
 - F - Refrigerator
 - DB - Distribution Board
 - ST - Storage
 - * - Mirrored Unit

Area includes A/C ledge, balconies, private enclosed space and void (where applicable). Areas are estimated only and are subject to final survey. Plans are not to scale and subject to changes as may be required by the relevant authorities. The balconies shall not be enclosed unless with approved screen. For an illustration of the approved screen, please refer to the annex of balcony screen side letter.

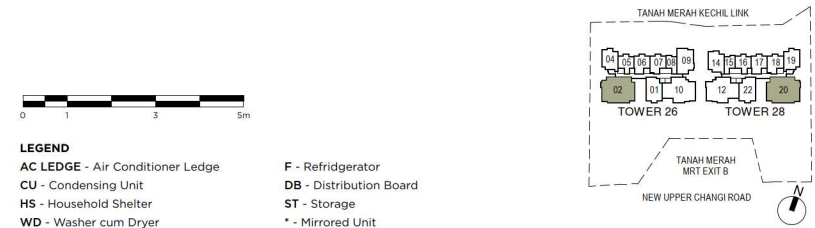
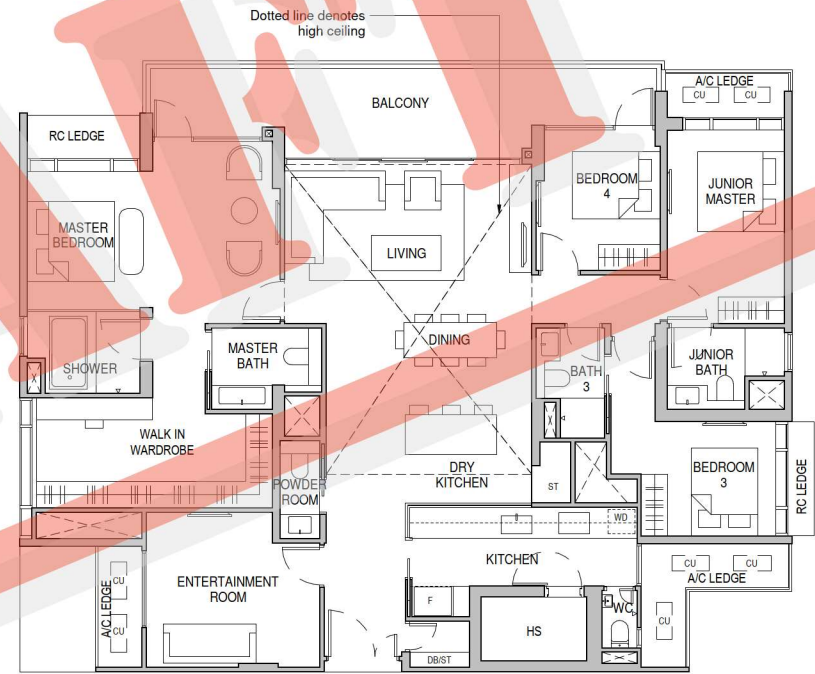
4-BEDROOM PENTHOUSE

TYPE PH2

2756 sqft / 256 sqm
(inclusive of 39 sqm High Ceiling)

Tower 26
15-02

Tower 28
14-20*



- LEGEND**
- AC LEDGE - Air Conditioner Ledge
 - CU - Condensing Unit
 - HS - Household Shelter
 - WD - Washer cum Dryer
 - F - Refrigerator
 - DB - Distribution Board
 - ST - Storage
 - * - Mirrored Unit

Area includes A/C ledge, balconies, private enclosed space and void (where applicable). Areas are estimated only and are subject to final survey. Plans are not to scale and subject to changes as may be required by the relevant authorities. The balconies shall not be enclosed unless with approved screen. For an illustration of the approved screen, please refer to the annex of balcony screen side letter.